



GT-G range applies the advanced GEL design and the purity fumed silica to form sulfuric acid thixotropic Gel, and fills the batteries with vacuum to ensure complete penetration of electrolyte through separators and plates pastes.

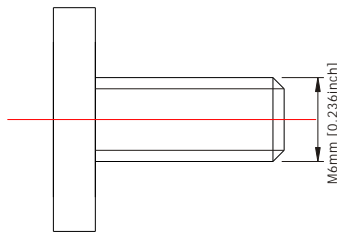
This range battery has excellent cycling capability and superior float life to meet the requirement of frequent cyclic and high temperature application such as Cable TV, Telecommunication, broadband, PVs etc.

Applications

- Broadband
- Electric Powered Vehicle
- UPS
- Photovoltaic & Solar System
- Telecommunication
- Cable TV
- Medical Equipments
- Golf Cars and Buggies

General Features

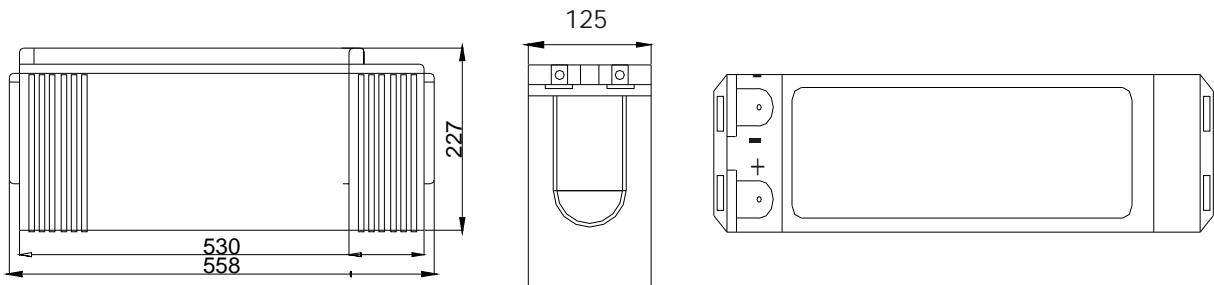
- Sealed and maintenance free operation.
- Non-Spillable construction design.
- ABS containers and covers(UL94HB, UL94V-0) optional.
- Safety valve installation for explosion proof.
- High quality and high reliability.
- Exceptional deep discharge recovery performance.
- Low self discharge characteristic.
- Flexibility design for multiple install positions.



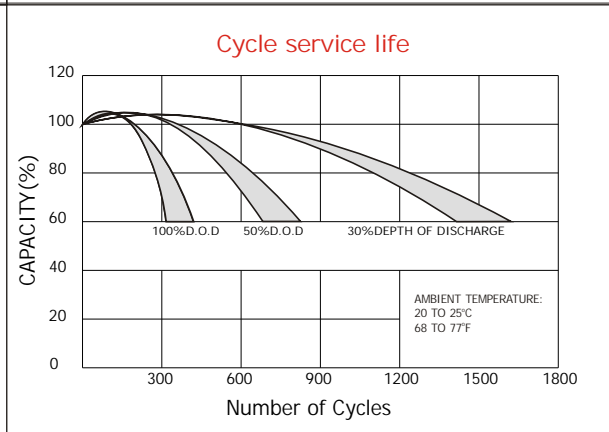
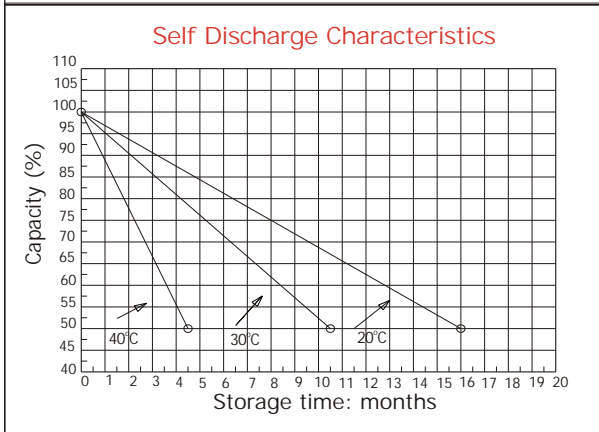
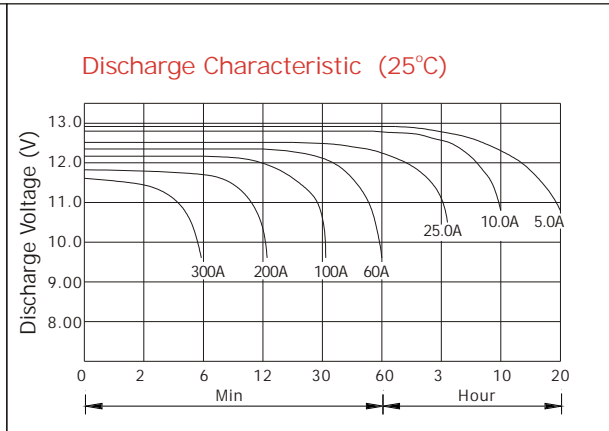
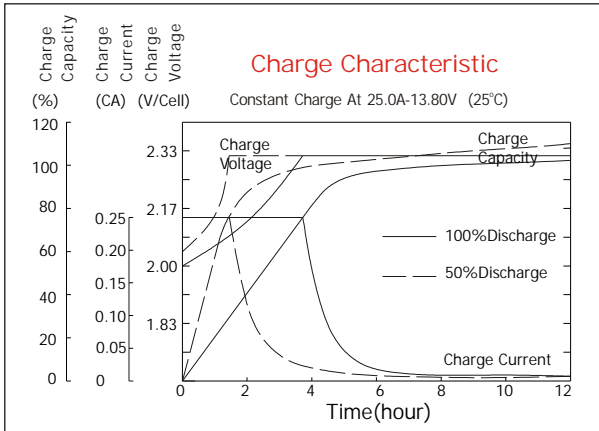
Terminal Dimensions

Construction

- ComponentRaw material
- PositiveLead dioxide
- NegativeLead
- ContainerABS
- CoverABS
- SealantEpoxy Resin
- Safety valveEPDR
- TerminalCopper
- SeparatorFiber glass
- ElectrolyteSulfuric acid



Battery Model	GT12-100FG			
Designed Floating Life	12 Years			
Capacity(25°C)	20HR(5.10A,1.75V)	10HR(10.0A,1.75V)	5HR(18.2A,1.75V)	1HR(58A,1.75V)
	102Ah	100Ah	91Ah	58Ah
Dimensions	Length	Width	Height	Total Height
	558mm(21.96inch)	125mm(4.92inch)	227mm(8.94inch)	227mm(8.94inch)
Approx. Weight	39.0Kg (85.8 lbs)			
Internal Resistance	Full charged at 25°C :0.00488 Ohm			
Self Discharge	3% of capacity declined per month at (25°C)			
Capacity Affected by Temp.(20HR)	40°C	25°C	0°C	-15°C
	105%	100%	85%	68%
Charge Voltage(25°C)	Cycle use		Float use	
	14.4-14.8V(-30mV/ °C), max. Current: 25A		13.6-13.8(-20mV/ °C)	



Constant current discharge ratings-amperes at 25°C

F. V/Time	5MIN	15MIN	30MIN	1HR	3HR	5HR	8HR	10HR	20HR
1.60V	335	172	103	61	27.9	18.4	12.7	10.3	5.30
1.67V	305	162	101	61	27.6	18.3	12.6	10.2	5.20
1.70V	295	158	100	60	27.5	18.2	12.5	10.1	5.20
1.75V	266	150	98	58	27.2	18.2	12.4	10.0	5.10
1.80V	240	142	95	55	27.0	18.0	12.2	9.8	5.00
1.85V	212	132	90	50	24.0	17.0	11.7	9.5	4.95

Constant power discharge ratings-watts at 25°C

F. V/Time	5MIN	15MIN	30MIN	1HR	3HR	5HR	8HR	10HR	20HR
1.60V	453	265	172	100	47.5	32.8	22.8	19.2	10.8
1.67V	449	263	172	99	47.4	32.8	22.8	19.2	10.8
1.70V	447	262	172	99	47.3	32.8	22.8	19.2	10.8
1.75V	442	260	171	99	47.0	32.7	22.8	19.2	10.8
1.80V	432	256	170	98	46.7	32.5	22.7	19.0	10.7
1.85V	392	246	164	93	44.8	31.7	22.0	18.7	10.3