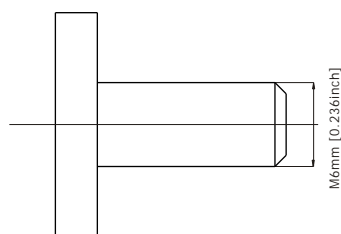


Rocked line designed with front terminal, GT-FA range extends service life to 10 years for normal standby and float service applications, offering high reliability and delivering superior performance while occupying less space and increasing energy density, and its total front access facilitates easy maintenance and installation.



Terminal Dimensions

Applications

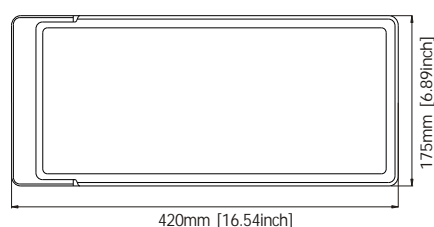
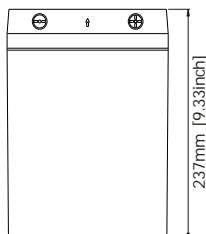
- Telecom
- Control Equipment
- Railroad Signal
- Communication Equipment
- Medical Equipment
- Electric Utility/Switchgear

General Features

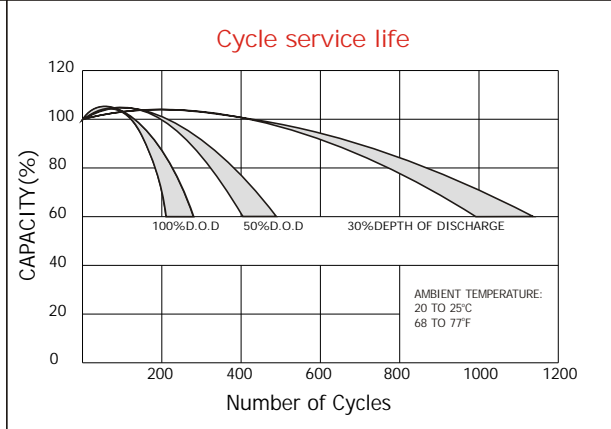
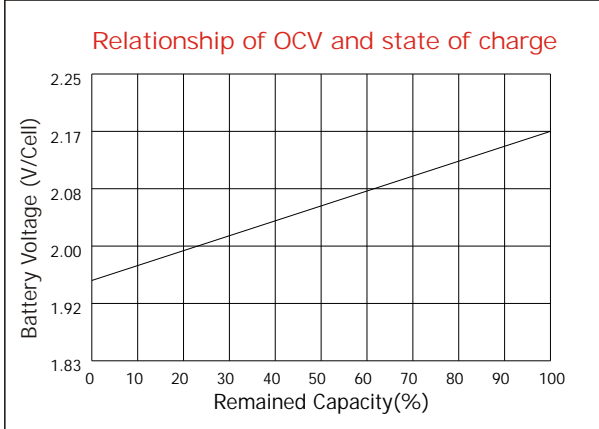
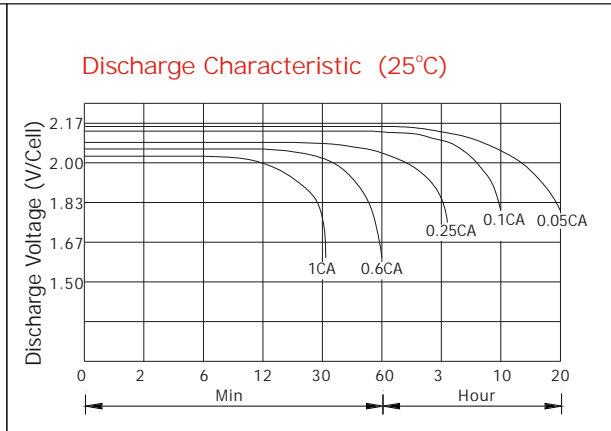
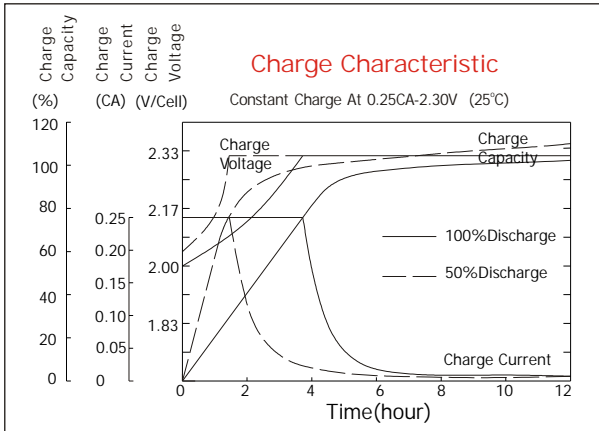
- Easy maintenance and installation
- No need for extra (wrench space) above battery
- Sealed and maintenance free operation
- Non-Spillable construction design
- ABS containers and covers(UL94HB, UL94V-0) optional
- Safety valve installation for explosion proof
- Maximized energy density for installation in relay rack trays
- High quality and high reliability
- Exceptional deep discharge recovery performance
- Flexibility design for multiple install positions

Construction

- ComponentRaw material
- PositiveLead dioxide
- NegativeLead
- ContainerABS
- CoverABS
- SealantEpoxy Resin
- Safety valveEPDR
- TerminalCopper
- SeparatorFiber glass
- ElectrolyteSulfuric acid



Battery Model	GT12-125FA			
Designed Floating Life	10 Years			
Capacity(25°C)	20HR(6.05A,1.75V)	10HR(12A,1.75V)	5HR(21.5A,1.75V)	1HR(79A,1.75V)
	127Ah	125Ah	107.5Ah	79Ah
Dimensions	Length	Width	Height	Total Height
	420mm(16.54inch)	175mm(6.89inch)	237mm(9.33inch)	237mm(9.33inch)
Approx. Weight	41Kg (90.2 lbs)			
Internal Resistance	Full charged at 25°C: 0.004 Ohm			
Self Discharge	3% of capacity declined per month at (25°C)			
Capacity Affected by Temp.(20HR)	40°C	25°C	0°C	-15°C
	102%	100%	85%	65%
Charge Voltage(25°C)	Cycle use		Float use	
	14.4-15V(-30mV/ °C), max. Current: 31.5A		13.6-13.8V(-20mV/ °C)	



Constant current discharge ratings-amperes at 25°C

F.V/Time	1MIN	5MIN	10MIN	15MIN	30MIN	1HR	3HR	4HR	5HR	10HR	20HR
1.60V	624	445	305	222	133	83.8	34.7	28.1	24.2	13.5	6.96
1.67V	562	400	278	216	130	83.7	34.5	28.0	24.0	13.3	6.93
1.70V	533	380	268	208	127	83.4	34.5	28.0	24.0	13.2	6.93
1.75V	474	338	248	197	124	82.6	34.3	27.8	23.8	12.9	6.90
1.80V	428	305	230	188	121	81.5	34.2	27.6	23.6	12.7	6.66
1.85V	325	231	189	163	111	80.6	34.0	27.4	23.4	12.5	6.26

Constant power discharge ratings-watts at 25°C

F.V/Time	1MIN	5MIN	10MIN	15MIN	30MIN	1HR	3HR	4HR	5HR	10HR	20HR
1.60V	1029	733	505	394	251	165	66.5	53.9	46.4	26.9	13.9
1.67V	976	695	499	390	246	160	66.5	53.9	46.4	26.5	13.9
1.70V	911	649	486	384	240	155	66.5	53.9	46.4	26.3	13.9
1.75V	849	605	455	361	234	154	65.5	53.2	45.8	25.9	13.8
1.80V	762	542	423	339	227	151	64.6	52.4	45.1	25.4	13.3
1.85V	610	434	351	296	208	150	64.4	51.9	44.5	25.0	12.5

